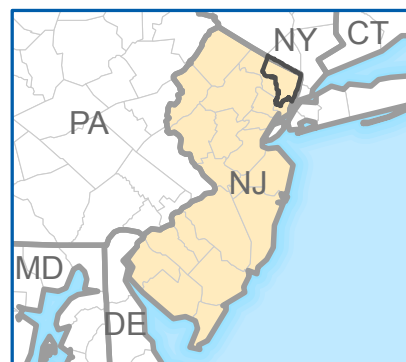
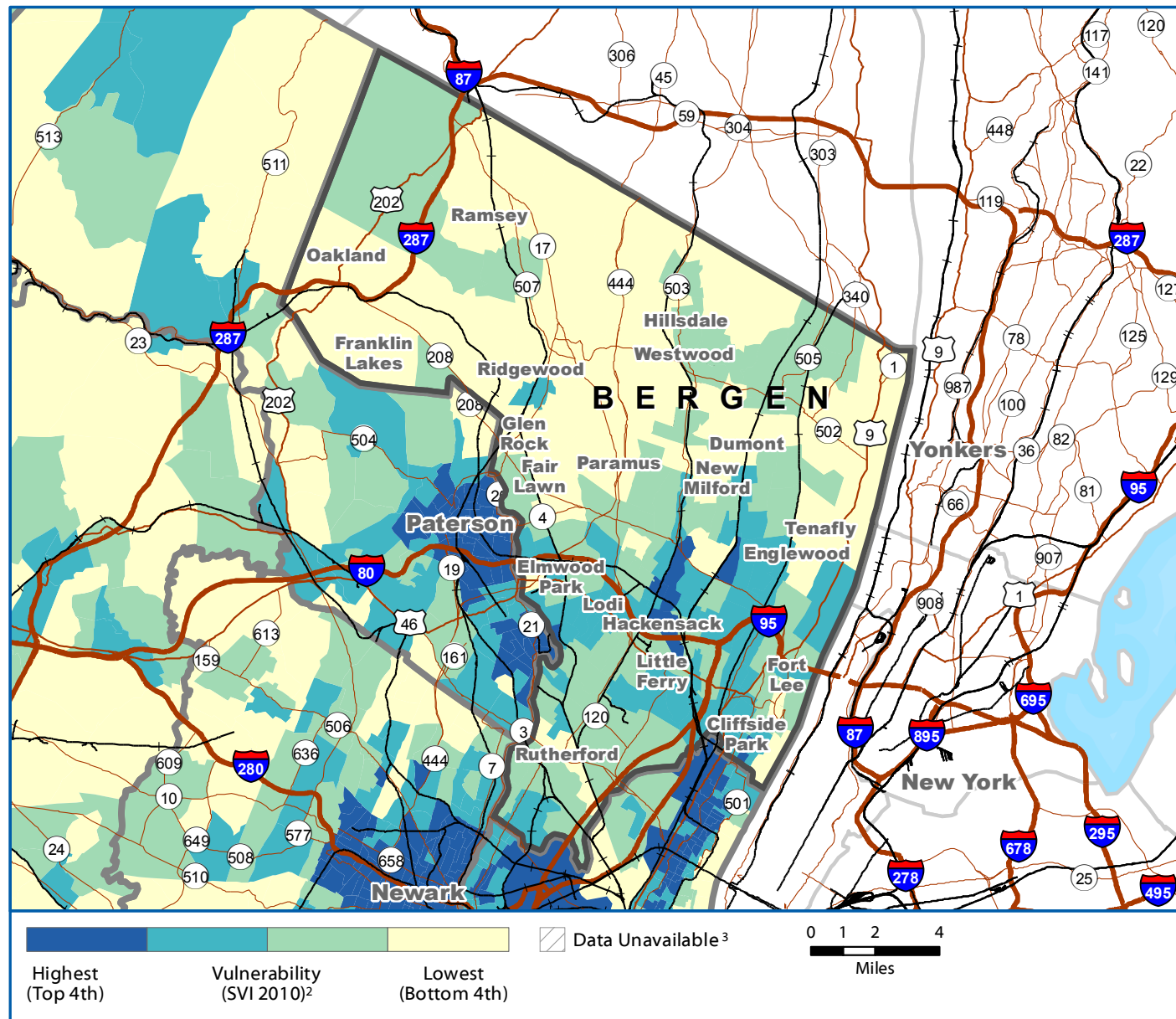


Social Vulnerability Index 2010

Bergen County, New Jersey

PART 1

Overall Social Vulnerability¹



Social vulnerability refers to a community's capacity to prepare for and respond to the stress of hazardous events ranging from natural disasters, such as tornadoes or disease outbreaks, to human-caused threats, such as toxic chemical spills. The **Social Vulnerability Index (SVI 2010)⁴ County Map** depicts the social vulnerability of communities, at census tract level, within a specified county. SVI 2010 groups **fourteen census-derived factors** into **four themes** that summarize the extent to

which the area is socially vulnerable to disaster. The factors include economic data as well as data regarding education, family characteristics, housing, language ability, ethnicity, and vehicle access. Overall Social Vulnerability combines all the variables to provide a comprehensive assessment.



Agency for Toxic Substances and Disease Registry
Division of Toxicology and Human Health Sciences

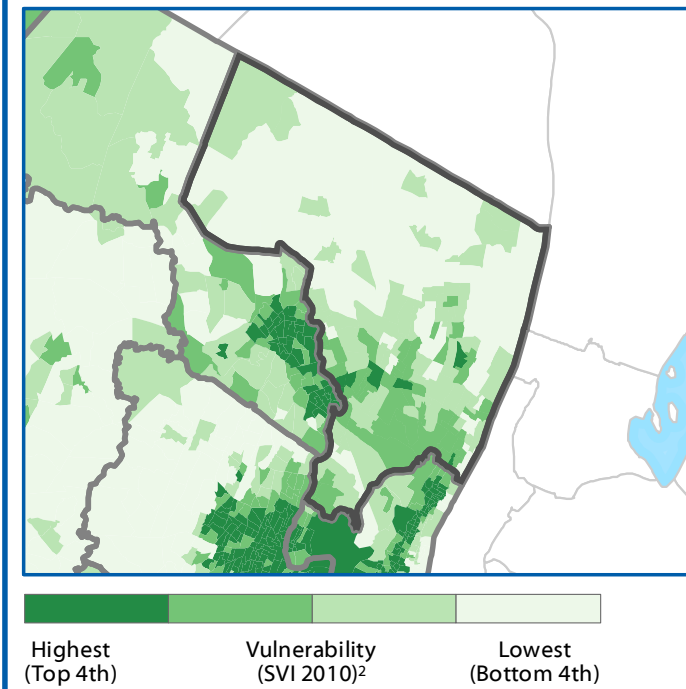
FINAL - FOR EXTERNAL USE

SVI 2010 - BERGEN COUNTY, NEW JERSEY

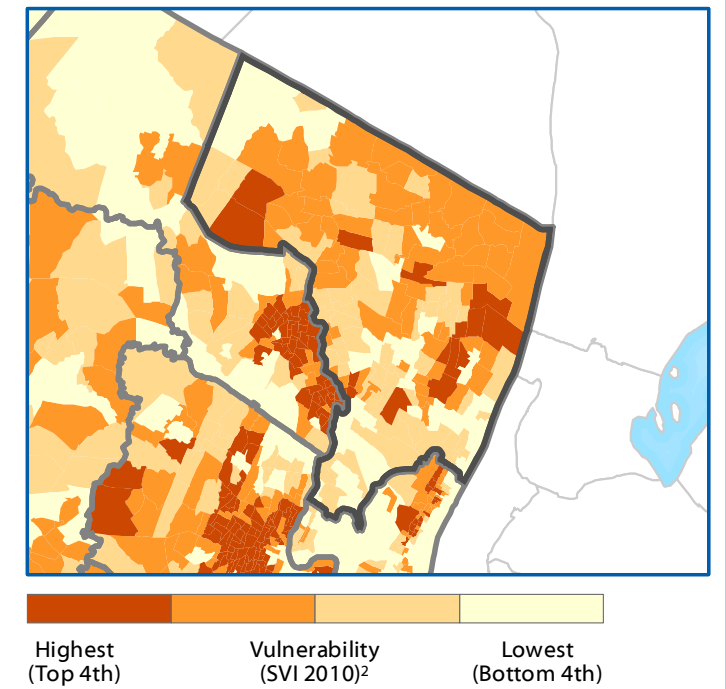
PART 2

SVI Themes

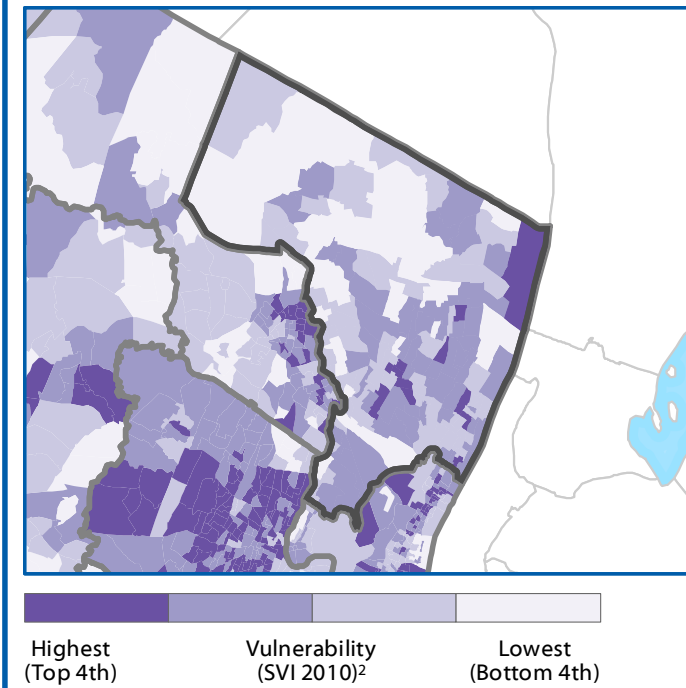
Socioeconomic Status⁵



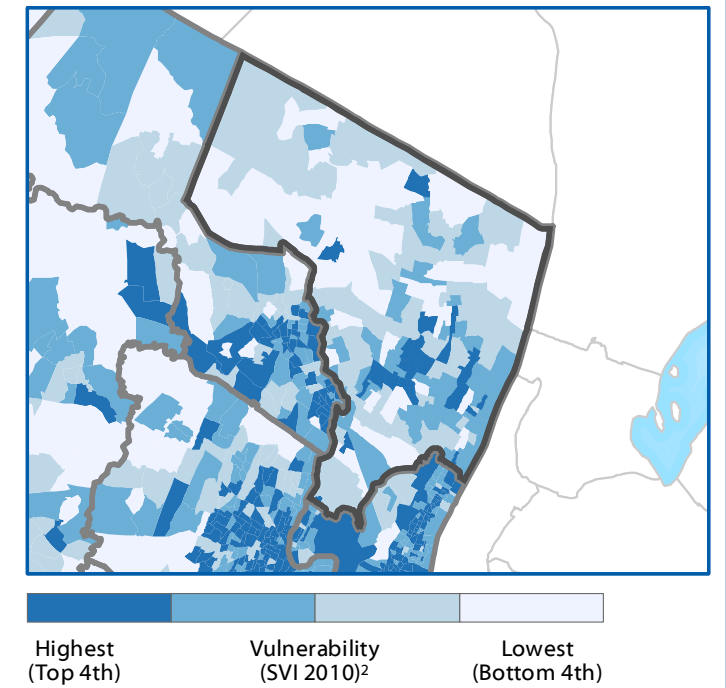
Household Composition⁶



Race/Ethnicity/Language⁷



Housing/Transportation⁸



Data Sources: ²ATSDR GRASP.

Notes: ¹Overall Social Vulnerability: All 14 variables. ²Census tracts with 0 population. ³The SVI combines percentile rankings of US Census 2010 and American Community Survey (ACS) 2006-2010 variables, for the state of interest, at the census tract level. ⁴Socioeconomic Status: Poverty, Unemployed, Per Capita Income, No High School Diploma. ⁵Household Composition: Aged 65 and Over, Aged 17 and Younger, Single-parent Household. ⁶Race/Ethnicity/Language: Minority, English Language Ability. ⁷Housing/Transportation: Multi-unit, Mobile Homes, Crowding, No Vehicle, Group Quarters.

Projection: NAD 1983 StatePlane New Jersey FIPS 2900.

Reference: Flanagan, B.E., et al., A Social Vulnerability Index for Disaster Management. *Journal of Homeland Security and Emergency Management*, 2011.8(1).

MAP PRODUCED 3/25/2014



FINAL - FOR EXTERNAL USE