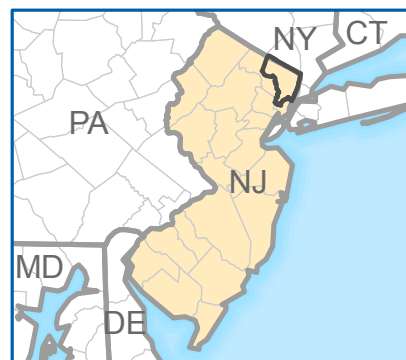
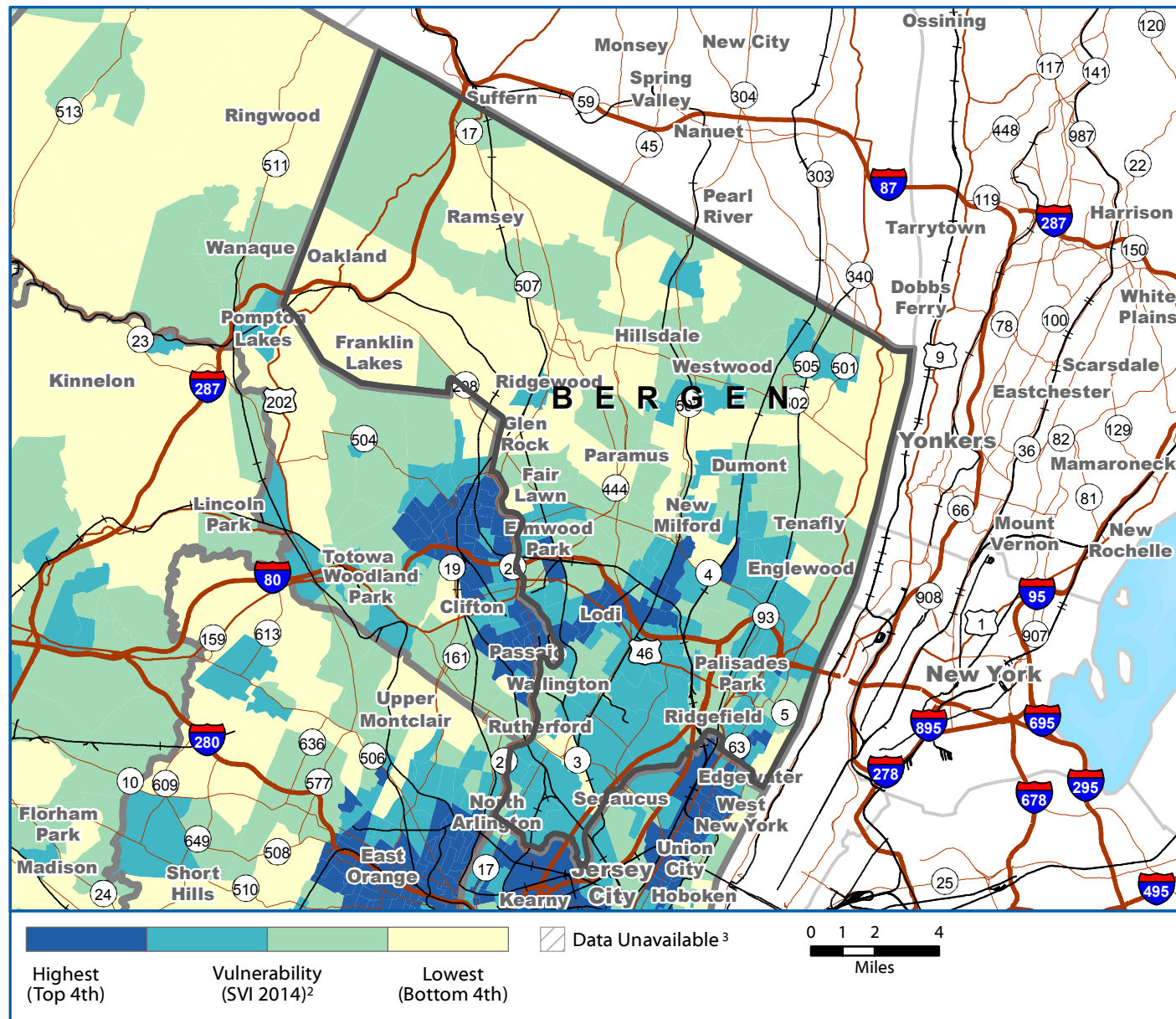


Social Vulnerability Index 2014

Bergen County, New Jersey

PART 1

Overall Social Vulnerability¹



Social vulnerability refers to a community's capacity to prepare for and respond to the stress of hazardous events ranging from natural disasters, such as tornadoes or disease outbreaks, to human-caused threats, such as toxic chemical spills. The **Social Vulnerability Index (SVI 2014)⁴ County Map** depicts the social vulnerability of communities, at census tract level, within a specified county. SVI 2014 groups **fifteen census-derived factors** into **four themes** that summarize the extent to which the area

is socially vulnerable to disaster. The factors include economic data as well as data regarding education, family characteristics, housing, language ability, ethnicity, and vehicle access. Overall Social Vulnerability combines all the variables to provide a comprehensive assessment.



MAP PRODUCED 7/19/2016

Agency for Toxic Substances and Disease Registry
Division of Toxicology and Human Health Sciences

FINAL - FOR EXTERNAL USE

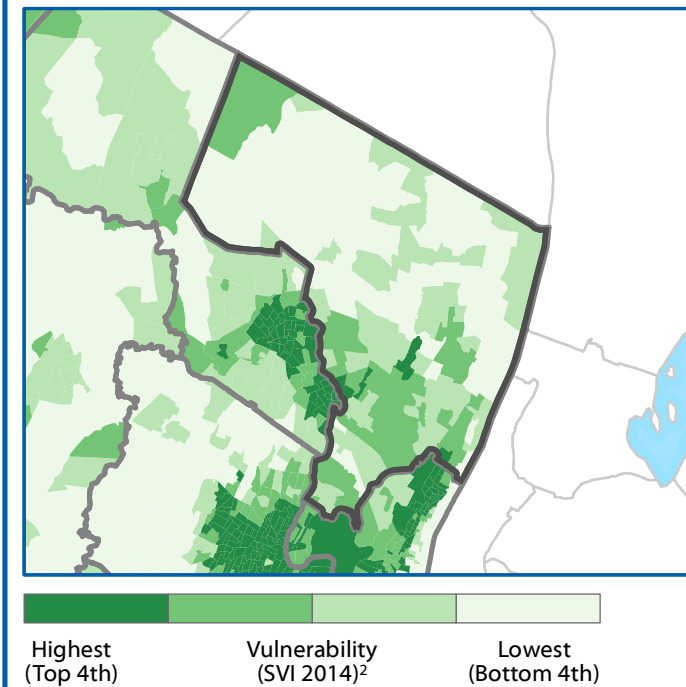


SVI 2014 - BERGEN COUNTY, NEW JERSEY

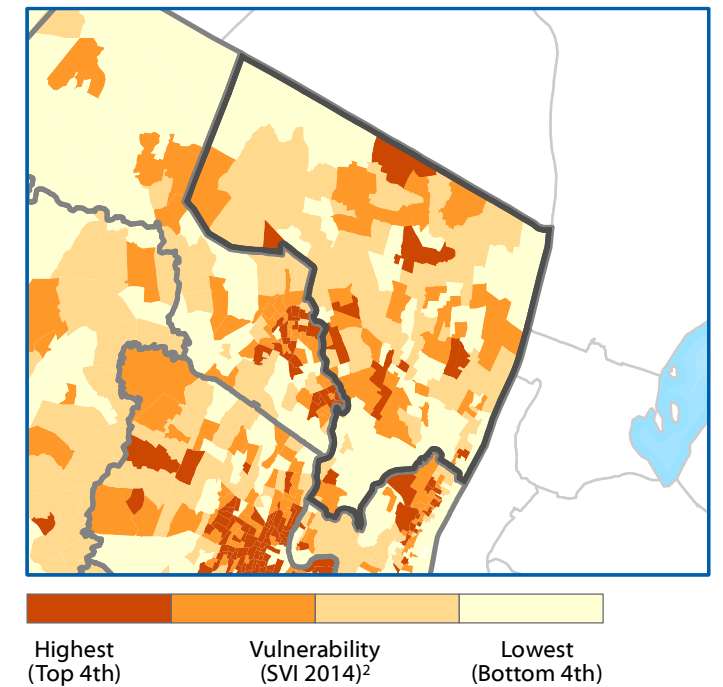
PART 2

SVI Themes

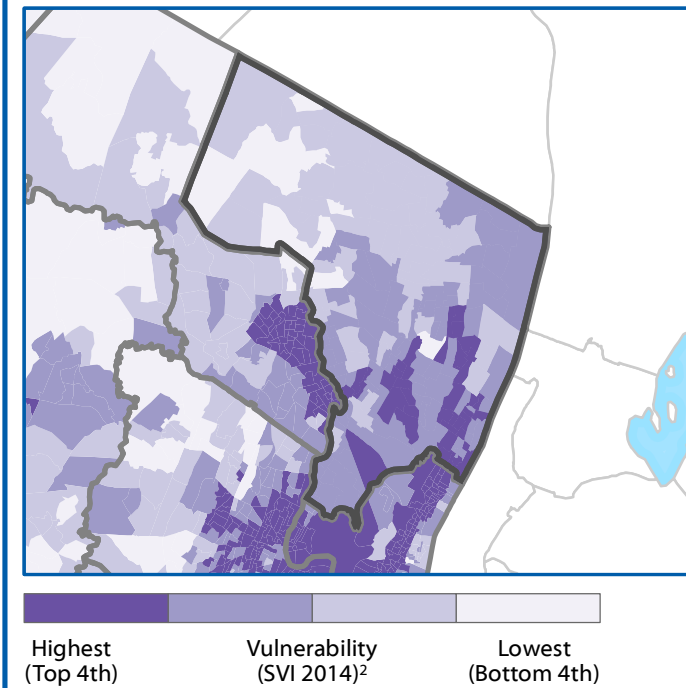
Socioeconomic Status⁵



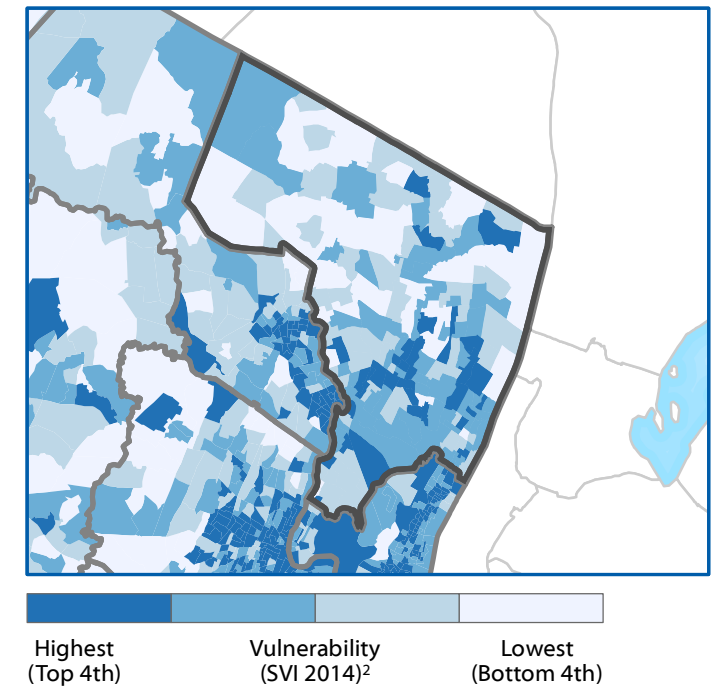
Household Composition⁶



Race/Ethnicity/Language⁷



Housing/Transportation⁸



Data Sources: ²ATSDR GRASP.

Notes: ¹Overall Social Vulnerability: All 15 variables. ³Census tracts with 0 population. ⁴The SVI combines percentile rankings of US Census American Community Survey (ACS) 2010-2014 variables, for the state of interest, at the census tract level. ⁵Socioeconomic Status: Poverty, Unemployed, Per Capita Income, No High School Diploma. ⁶Household Composition/Disability: Aged 65 and Over, Aged 17 and Younger, Single-parent Household, Aged 5 and over with a Disability. ⁷Race/Ethnicity/Language: Minority, English Language Ability. ⁸Housing/Transportation: Multi-unit, Mobile Homes, Crowding, No Vehicle, Group Quarters.

Projection: NAD 1983 StatePlane New Jersey FIPS 2900.

Reference: Flanagan, B.E., et al., A Social Vulnerability Index for Disaster Management. *Journal of Homeland Security and Emergency Management*, 2011. 8(1).

FINAL - FOR EXTERNAL USE