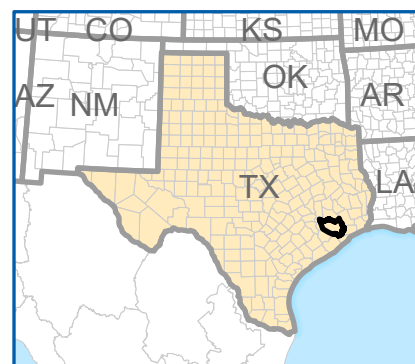
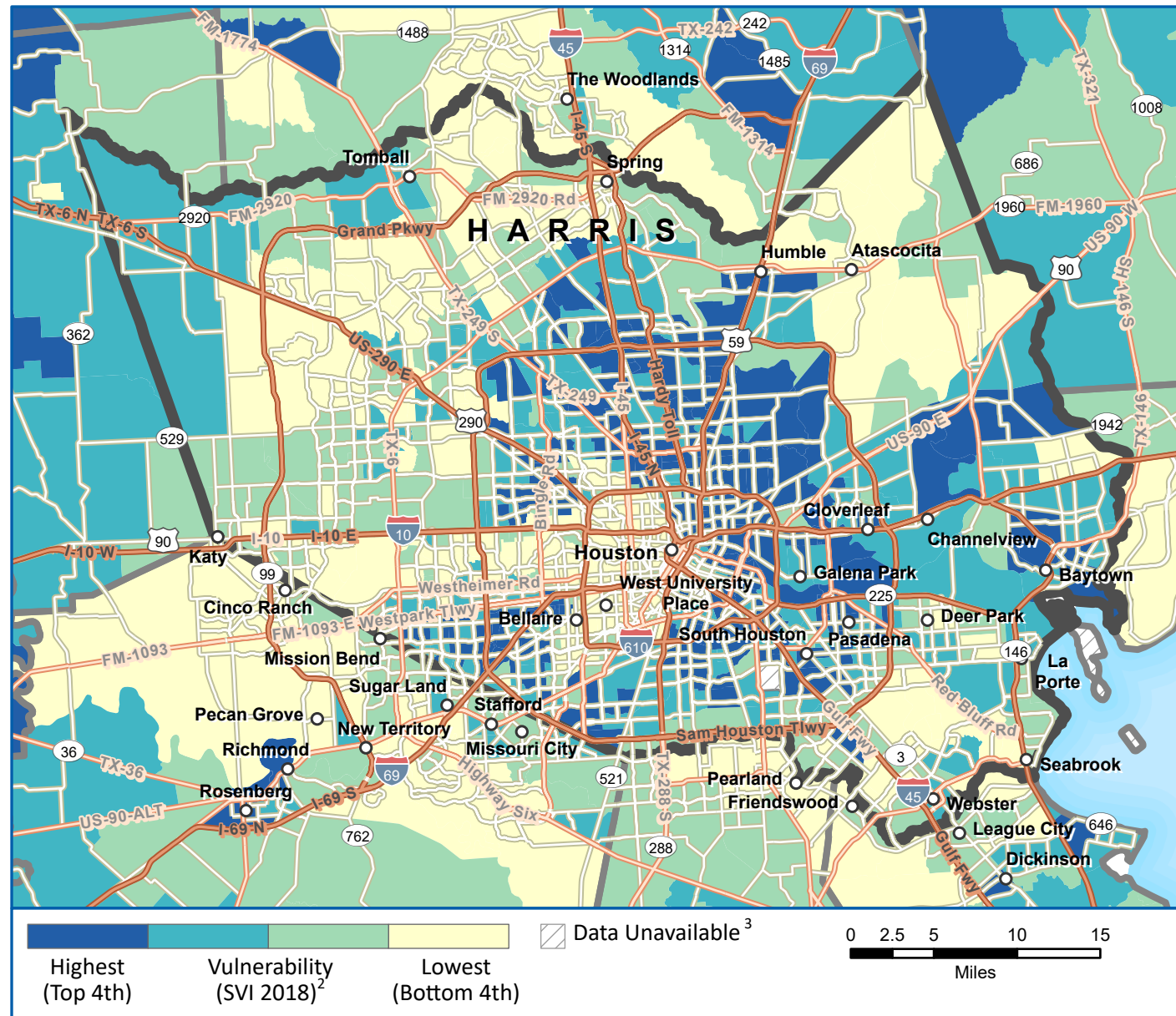


# CDC Social Vulnerability Index 2018

Harris County, Texas

PART 1

## Overall Social Vulnerability<sup>1</sup>



**Social vulnerability** refers to a community's capacity to prepare for and respond to the stress of hazardous events ranging from natural disasters, such as tornadoes or disease outbreaks, to human-caused threats, such as toxic chemical spills. The **CDC Social Vulnerability Index (CDC SVI 2018)**<sup>4</sup> County Map depicts the social vulnerability of communities, at census tract level, within a specified county. CDC SVI

2018 groups **fifteen census-derived factors** into **four themes** that summarize the extent to which the area is socially vulnerable to disaster. The factors include economic data as well as data regarding education, family characteristics, housing, language ability, ethnicity, and vehicle access. Overall Social Vulnerability combines all the variables to provide a comprehensive assessment.

MAP PRODUCED 3/16/2020

Agency for Toxic Substances and Disease Registry  
Division of Toxicology and Human Health Sciences



FINAL - FOR EXTERNAL USE

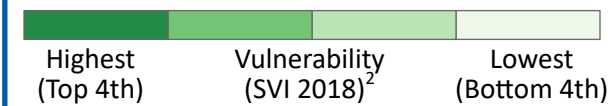
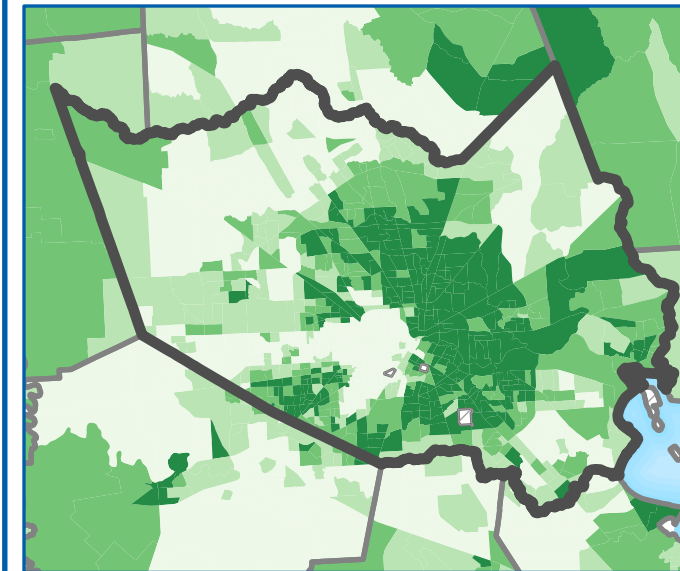


CDC SVI 2018 – HARRIS COUNTY, TEXAS

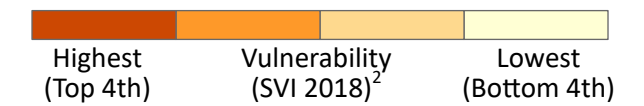
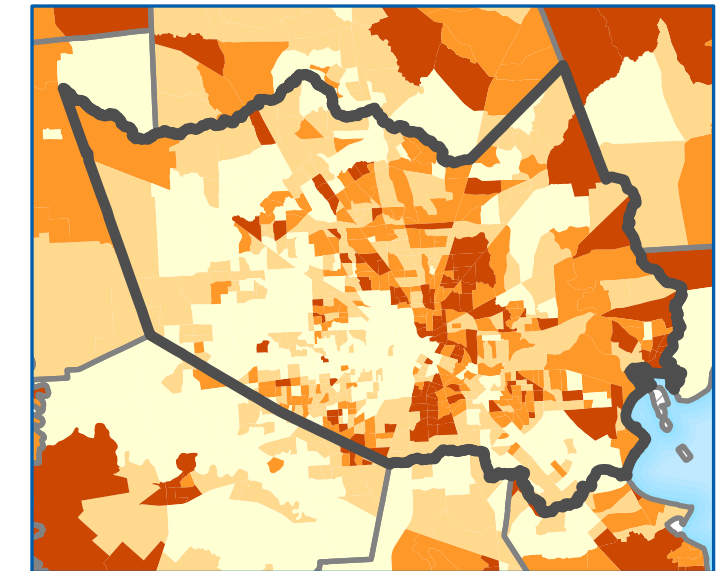
PART 2

## CDC SVI Themes

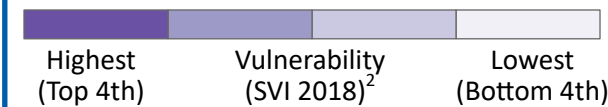
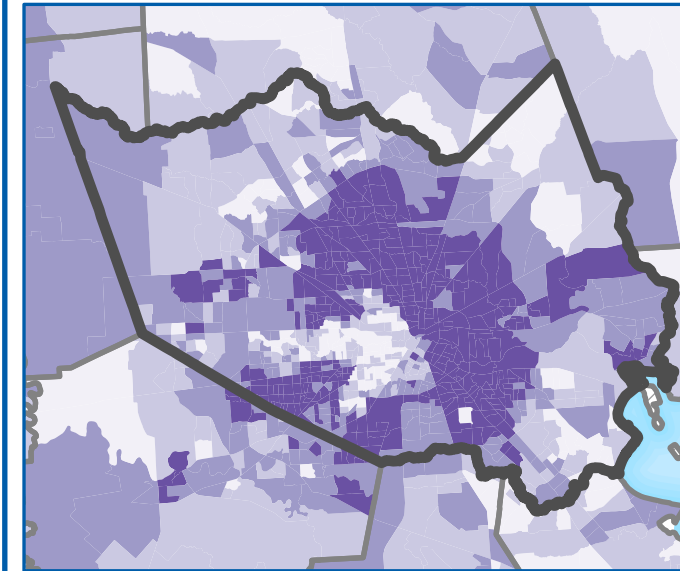
### Socioeconomic Status<sup>5</sup>



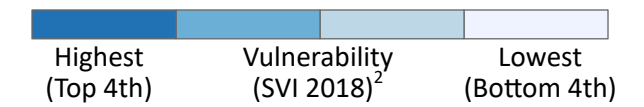
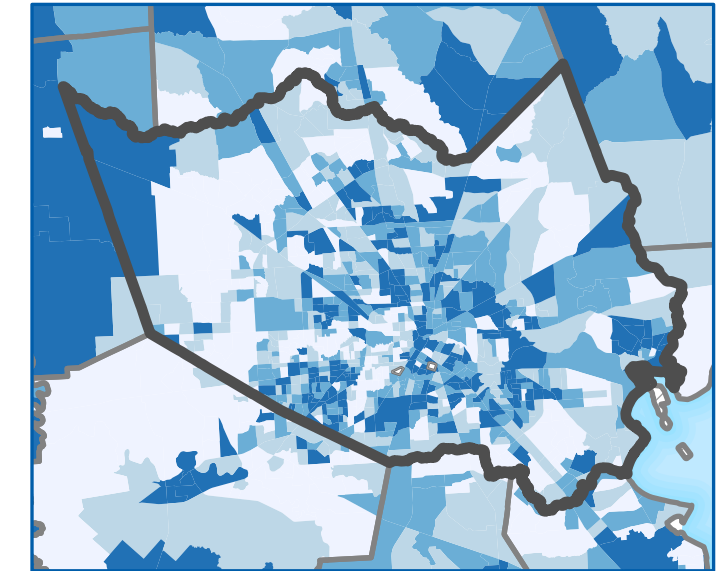
### Household Composition/Disability<sup>6</sup>



### Race/Ethnicity/Language<sup>7</sup>



### Housing Type/Transportation<sup>8</sup>



**Data Sources:** <sup>2</sup>CDC/ATSDR/GRASP, U.S. Census Bureau, Esri® StreetMap™ Premium.  
**Notes:** <sup>1</sup>Overall Social Vulnerability: All 15 variables. <sup>3</sup>Census tracts with 0 population. <sup>4</sup>The CDC SVI combines percentile rankings of US Census American Community Survey (ACS) 2014-2018 variables, for the state, at the census tract level. <sup>5</sup>Socioeconomic Status: Poverty, Unemployed, Per Capita Income, No High School Diploma. <sup>6</sup>Household Composition/Disability: Aged 65 and Over, Aged 17 and Younger, Single-parent Household, Aged 5 and over with a Disability. <sup>7</sup>Race/Ethnicity/Language: Minority, English Language Ability. <sup>8</sup>Housing Type/Transportation: Multi-unit, Mobile Homes, Crowding, No Vehicle, Group Quarters.  
**Projection:** NAD 1983 Texas Statewide Mapping System.  
**References:** Flanagan, B.E., et al., A Social Vulnerability Index for Disaster Management. *Journal of Homeland Security and Emergency Management*, 2011. 8(1).  
CDC SVI web page: <http://svi.cdc.gov>.

FINAL - FOR EXTERNAL USE