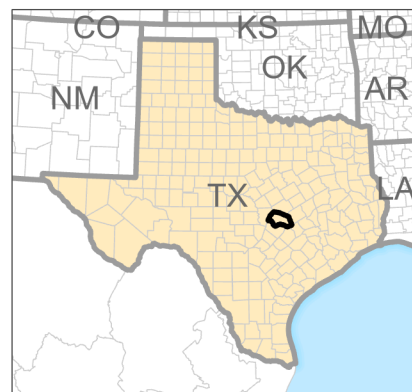
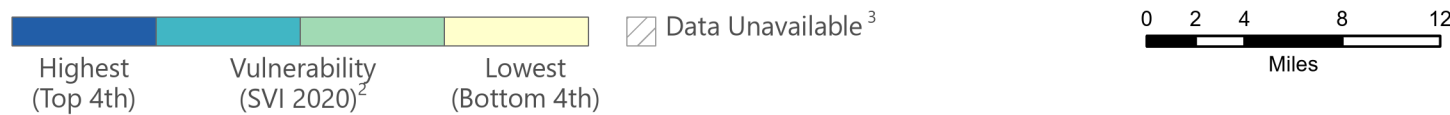
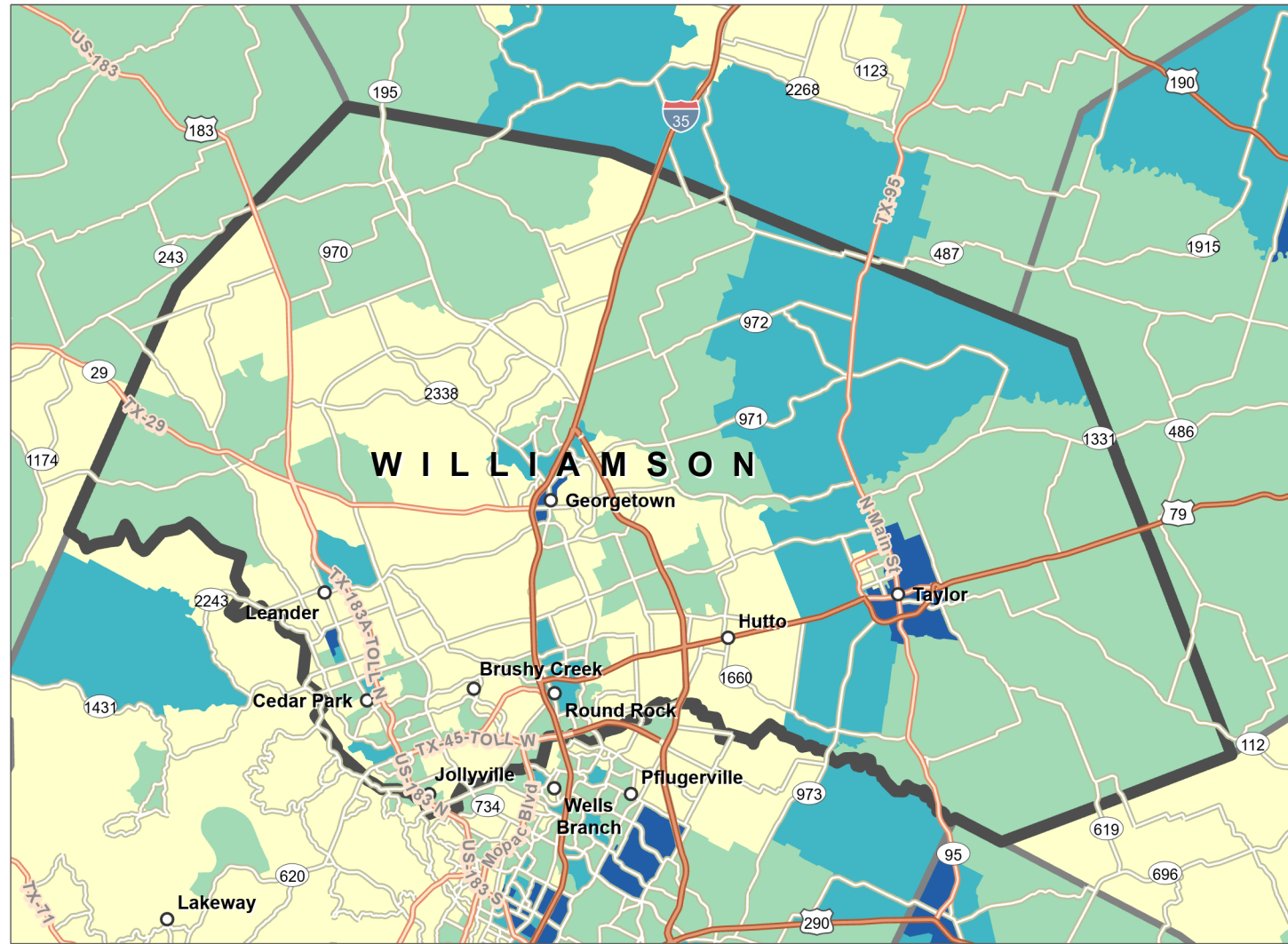


Overall Social Vulnerability¹



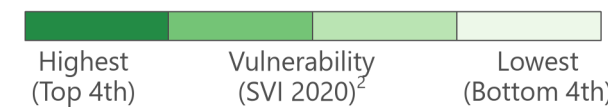
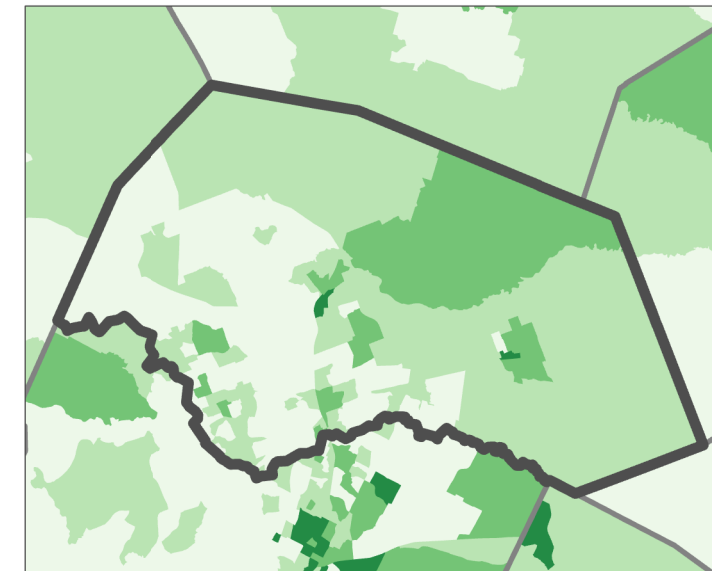
Social vulnerability refers to a community's capacity to prepare for and respond to the stress of hazardous events ranging from natural disasters, such as tornadoes or disease outbreaks, to human-caused threats, such as toxic chemical spills. The **CDC/ATSDR Social Vulnerability Index (CDC/ATSDR SVI 2020)**⁴ County Map depicts the social vulnerability of communities, at census tract level, within a specified

county. CDC/ATSDR SVI 2020 groups **sixteen census-derived factors** into **four themes** that summarize the extent to which the area is socially vulnerable to disaster. The factors include economic data as well as data regarding education, family characteristics, housing, language ability, ethnicity, and vehicle access. Overall Social Vulnerability combines all the variables to provide a comprehensive assessment.

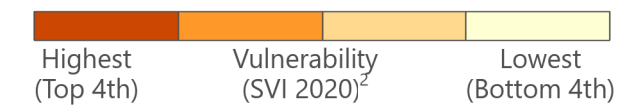
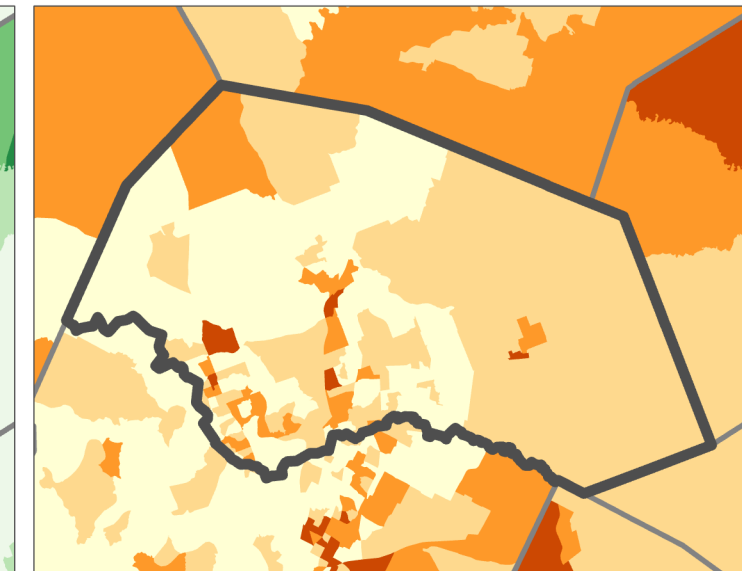
CDC/ATSDR SVI Themes



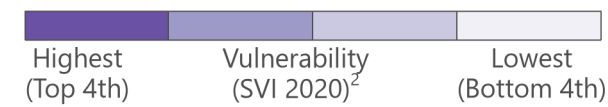
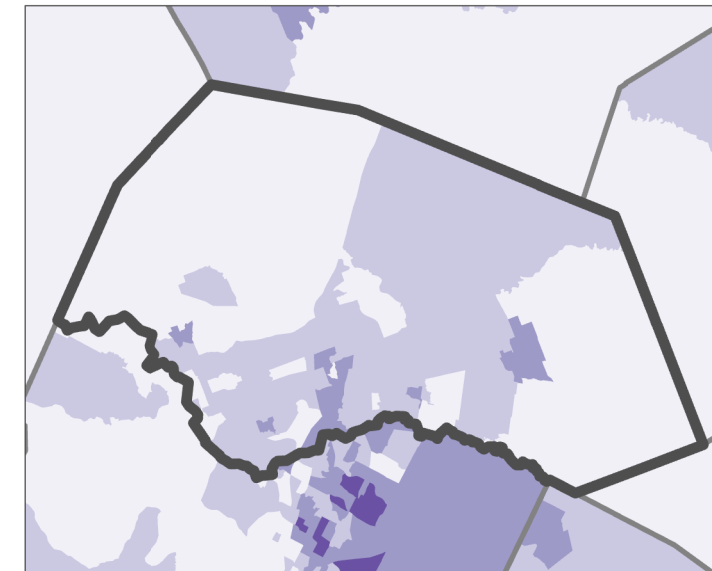
Socioeconomic Status⁵



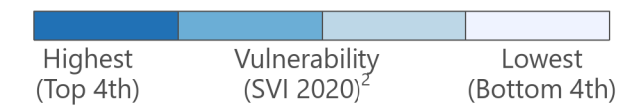
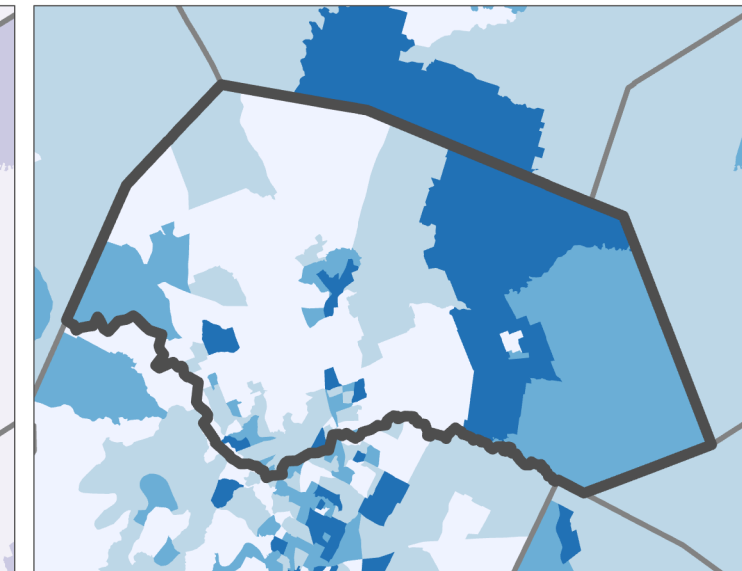
Household Characteristics⁶



Racial and Ethnic Minority Status⁷



Housing Type/Transportation⁸



Data Sources: ²CDC/ATSDR/GRASP, U.S. Census Bureau, Esri® StreetMap™ Premium.

Notes: ¹Overall Social Vulnerability: All 16 variables. ³Census tracts with 0 population. ⁴The CDC/ATSDR SVI combines percentile rankings of US Census American Community Survey (ACS) 2016-2020 variables, for the state, at the census tract level. ⁵Socioeconomic Status: Below 150% Poverty, Unemployed, Housing Costs Burden, No High School Diploma, No Health Insurance. ⁶Household Characteristics: Aged 65 and Older, Aged 17 and Younger, Civilian with a Disability, Single-Parent Household, English Language Proficiency. ⁷Race/Ethnicity: Hispanic or Latino (of any race); Black and African American, Not Hispanic or Latino; American Indian and Alaska Native, Not Hispanic or Latino; Asian, Not Hispanic or Latino; Native Hawaiian and Other Pacific Islander, Not Hispanic or Latino; Two or More Races, Not Hispanic or Latino; Other Races, Not Hispanic or Latino. ⁸Housing Type/Transportation: Multi-Unit Structures, Mobile Homes, Crowding, No Vehicle, Group Quarters.

Projection: NAD 1983 Texas Statewide Mapping System.
References: Flanagan, B.E., et al., A Social Vulnerability Index for Disaster Management. *Journal of Homeland Security and Emergency Management*, 2011. 8(1).
 CDC/ATSDR SVI web page: <https://www.atsdr.cdc.gov/placeandhealth/svi/index.html>.